

## Airpot Coffee Brewer

### Features

#### Airpot Coffee Brewer

- Brews 3.8 to 7.5 gallons (14.4 to 28.4 litres) of perfect coffee per hour.
- Brews directly into 1.9 to 3 litre airpots.
- Convenient airpots keep coffee hot and fresh for hours.
- Airpots are easily transported to remote meeting rooms, breakfast bars, etc.
- Pourover model available (CW15-APS).
- Pourover feature included on automatic models.
- Faucet available on CWTF models only.
- Gourmet funnel model available for use with heavier throw weights of coffee.
- Digital timer enables users to make brew cycle adjustments from the front panel.
- International electrical configurations available.



#### Model CWTF APS with Airpot\*

(airpot sold separately)  
Dimensions: 23.6" H x 9" W x 18.5" D  
(59.9cm H x 22.9cm W x 47cm D)



#### Model CW15-APS with Airpot\*

(airpot sold separately)  
Dimensions: 23.6" H x 9" W x 18.5" D  
(59.9cm H x 22.9cm W x 47cm D)

For current specification sheets and other information, go to [www.bunn.com](http://www.bunn.com).

\* International models may vary in appearance.

### Related Products

#### Easy Clear® EQ-17-TL

Product No. : 30200.1000  
Dimensions:  
12<sup>7</sup>/<sub>16</sub>" H x 2<sup>1</sup>/<sub>2</sub>" W x 3" D  
31.6 cm H x 6.35 cm W x 7.62 cm D



#### Easy Clear® ED-17-TL

Product No. : 30201.1001  
Dimensions: 8<sup>1</sup>/<sub>4</sub>" H x 2<sup>5</sup>/<sub>16</sub>" Dia.  
20.95 cm H x 5.87 cm Dia.

#### Paper Filter Pack

Product No. : 20115.0000  
Packed per case: 1,000  
Dimensions: 4<sup>1</sup>/<sub>4</sub>" Base x 2<sup>3</sup>/<sub>4</sub>" Sidewall  
10.8 cm Base x 6.98 cm Sidewall



#### 2.2 litre Push-Button Airpot

Product No. : 28696.0002  
Capacity: 74 oz. (2.19 L)



#### 2.5 litre Push-Button Airpot

Product No. : 13041.0001  
Capacity: 84 oz. (2.48 L)

#### 2.5 litre Lever-Action Airpot

Product No. : 32125.0000  
Capacity: 84 oz. (2.48 L)

#### 3.0 litre Lever-Action Airpot

Product No. : 32130.0000  
Capacity: 102 oz. (3.0 L)



#### Universal Airpot Racks

for push-button and lever-action airpots.  
See page A3.9 for more information.



#### Gourmet C Funnel

Product No.: 34559.0000 (7.12 inch width)  
34559.0001 (7.62 inch width)

- Universal design— handle may be moved to appropriate side
- Allows brewing with heavier throw weights of coffee.
- Paper Filter Pack  
Product No. : 20100.0000  
Packed per case: 1,000



#### Model

#### Agency Listing

CW APS  
CWT APS  
CWTF APS



## Dimensions & Specifications

| Model         | Product #  | Volts       | Amps | Tank Heater Watts | Total Watts | Brewing Capacity | Cubic Ft. | Shipping Weight | Cord Attached |
|---------------|------------|-------------|------|-------------------|-------------|------------------|-----------|-----------------|---------------|
| CW15-APS*     | 23001.0000 | 120         | 11.4 | 1320              | 1370        | 3.8 gal./hr.     | 5.0       | 28 lbs.         | Yes†          |
| CW15-APS***   | 23001.0062 | 120         | 11.4 | 1320              | 1370        | 3.8 gal./hr.     | 5.0       | 28 lbs.         | Yes†          |
| CWT15-APS     | 23001.0003 | 120         | 11.4 | 1320              | 1370        | 3.8 gal./hr.     | 5.0       | 29 lbs.         | Yes†          |
| CWTF15-APS**  | 23001.0017 | 120         | 11.4 | 1320              | 1370        | 3.8 gal./hr.     | 5.1       | 38 lbs.         | Yes†          |
| CWTF15-APS    | 23001.0006 | 120         | 11   | 1320              | 1370        | 3.8 gal./hr.     | 5.0       | 33 lbs.         | Yes†          |
| CWTF15-APS*** | 23001.0051 | 120         | 11.4 | 1320              | 1370        | 3.8 gal./hr.     | 5.2       | 37 lbs.         | Yes†          |
| CWTF20-APS    | 23001.0007 | 120         | 15.4 | 1800              | 1850        | 5.1 gal./hr.     | 5.0       | 32 lbs.         | No            |
| CWTF35-APS    | 23001.0008 | 120/208-240 | 15   | 3500              | 3550        | 7.5 gal./hr.     | 5.0       | 33 lbs.         | No            |
| CWTF35-APS**  | 23001.0023 | 120/208-240 | 15   | 3500              | 3550        | 7.5 gal./hr.     | 5.0       | 33 lbs.         | No            |
| CWTF35-APS*** | 23001.0052 | 120/208-240 | 15   | 3500              | 3550        | 7.5 gal./hr.     | 5.2       | 37 lbs.         | No            |

\*Pourover model. \*\*Stainless steel funnel. \*\*\*Model has gourmet funnel. †Power cord (NEMA 5-15P) 15 Amp-120V machine only.

**Brewing capacity:** based upon incoming water temp of 60°F/15°C (140°F/60°C rise) per 1/2 gallon brew time of 4 minutes.

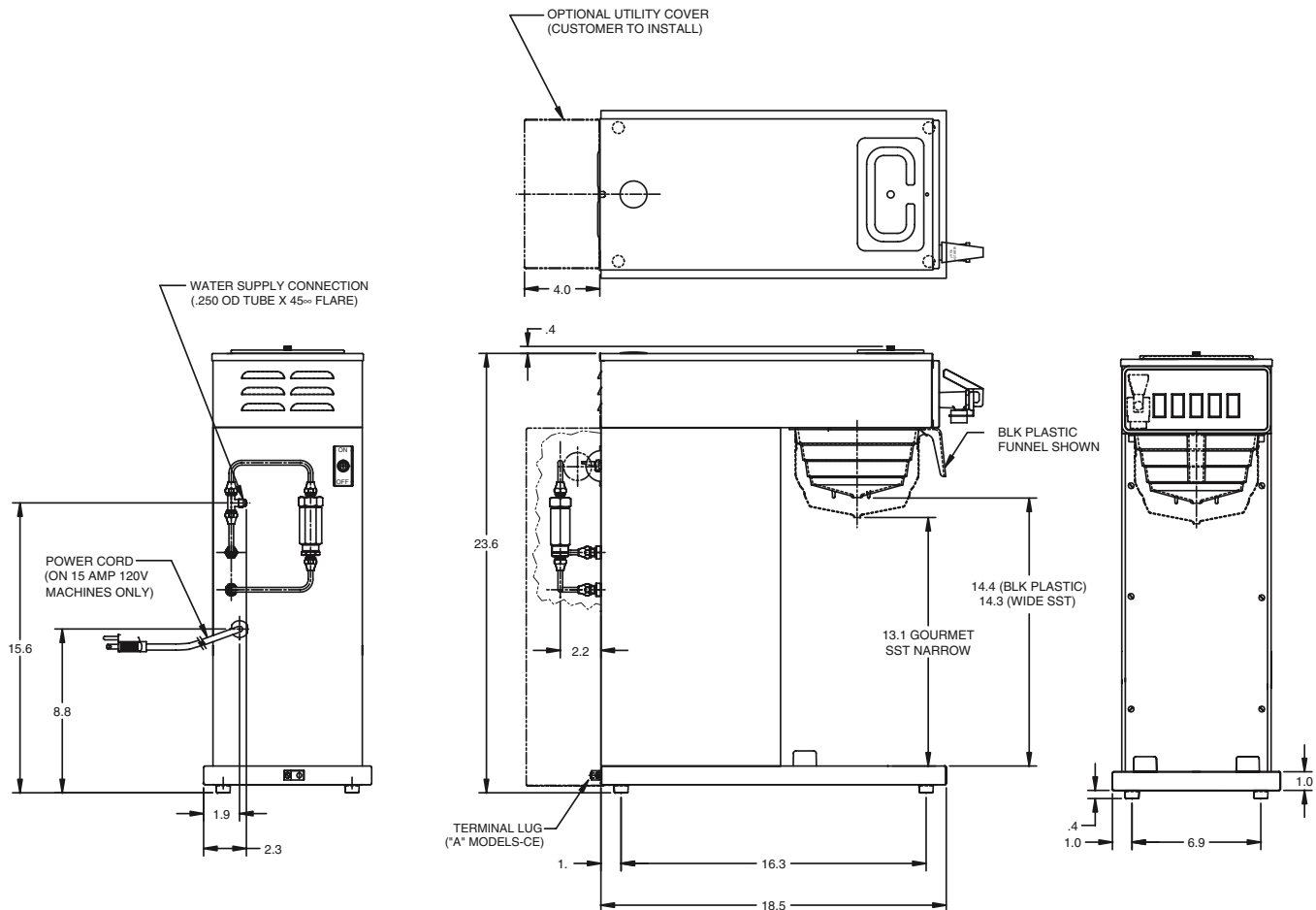
Models listed as 120/208V or 120/240V must be connected to 208V or 240V electrical service respectively. Please refer to the installation manual.

Electrical: CW15-APS, CWT15-APS & CWTF15-APS - require 2-wires plus ground service rated 120V, single phase, 60Hz.

CWTF20-APS - requires 2-wires plus ground service rated 120V, single phase, 60Hz.

CWT35-APS and CWTF35-APS - require 3-wires plus ground service rated 120/240V, single phase, 60Hz.

Plumbing: 20-90 psi (138-621 kPa). Supplied with 1/4" (6.4 mm) male flare fitting.



BUNN Corporation - 1400 Stevenson Drive Springfield, Illinois 62703 • 800-637-8606 • 217-529-6601 • Fax 217-529-6644 • www.bunn.com

BUNN® practices continuous product research and improvement. We reserve the right to change specifications and product design without notice. Such revisions do not entitle the buyer to corresponding changes, improvements, additions or replacements for previously purchased equipment.

All dimensions shown in inches. Bunn Corporation owns all copyrights relating to materials in this publication. Please contact Bunn Corporation to request permission to reproduce any portion of this publication.